

# Chapter Two

## EARTH EXPANSION & The Return of Christ Jesus

When God began creating the heavens and the earth. The earth was at first a shapeless chaotic mass, with the Spirit of God brooding over the dark watery vapors.

Then God said, "Let there be light." And the light appeared and then God separated the light from the darkness. He called the light day and the darkness night.

After God made man he said I have given you the seed-bearing plants throughout the earth, and all the fruit trees for your food and all the grass and plants.

At that time God had not caused it to rain upon the earth. But caused a mist from the earth, and this mist watered the whole face of the ground.

When man began to multiply God saw that the wickedness and violence of man was becoming very great and the imagination of the thoughts of his heart was only evil continually and this deeply grieved him to the point of breaking his heart.

My spirit shall not abide in man for he is flesh, but I shall number his days a hundred and twenty.

The earth had become corrupt in God's eyes, so God decided to make an end to man's wickedness and violence.

So God caused a flood to come upon the earth.

When Noah was 600 years old the subterranean waters burst forth upon the earth and for forty days and nights it rained.

Waters covered the earth twenty-two feet and more above the highest peaks.

The earth size or radius at the time of Noah or I should say the antediluvian world was much larger than it is today.

A catastrophic earthquake caused a collapse of most of the underground aquifers forcing water to explode out of the crust of the earth and gushing into the air resulting in a torrent of rain that flooded and covered the whole earth.

The crust at that time was like a giant sponge and that sponge collapsed resulting in the earth to dramatically shrink in size.

Most accounts of the great flood from civilizations around the world indicate that there were civilizations before the flood. However, as a result of the destruction during the flood and the passage of time, the remaining evidence is scanty. As a result of the flood, the earth was covered in hundreds of feet of sediment and very little of the antediluvian horizon has been exposed. Relatively insightful accounts can be drawn from the Bible, apocrypha, and ancient Babylonian and Greek accounts of antediluvian civilization.

150 days after the flood covered the earth, God caused a wind to blow across the earth and the flood started to recede, or should I say the earth started to absorb the water back into its underground aquifers. These aquifers began to grow.

The earth started to increase in size and has been growing ever since.

The expansion process dictates that seas recede from shorelines worldwide making the landmass appear to rise. All ancient civilizations after the flood evolved in the high mountains around the world. The Egyptian, Mesopotamian, Indus, Tibetan, Chinese, Incas and Aztecs all evolved at high elevations. The city of Babylon and Ur in ancient Mesopotamia were originally port cities.

Before the flood the atmosphere was much richer and contained more oxygen. The air we breathe is made up of 21 percent oxygen, 78 percent nitrogen and 1 percent carbon dioxide. The atmosphere before the flood was like being in a Hyperbaric Oxygen tank. The deeper one descends under water the greater the pressure and the oxygen levels increase. As the earth increases in size, the atmospheric pressure above sea level will increase bringing more oxygen into the air and without the pressure of the ocean water the gravity above sea level will actually decrease. The increase in oxygen into the air and the decrease in earth's above sea level gravity brought about by an expanding earth will bring about the increase in the lifespan of man.

A fog or vapor will rise at night and into the morning forming a canopy covering the earth, watering the ground and then this mist will be burned off and absorbed back into the ground during the day.

The ice caps will melt, Antarctica will again become semi-tropical. North Africa, Egypt & Australia will become lush and green. The ocean levels will first rise, then lower exposing more land mass. In other words the earth is reverting back to the way it was before the flood. And why not? Does not the Lord Jesus want to return the earth he himself created to the way it was before the flood?

There are many who say that the last generation will see the coming of the Lord Jesus return to claim his crown. Some say a generation is 40 yrs, others 70, and yet others say 120 yrs. But the truth is that the last generation who will witness the return of Christ is over 900 yrs. For a generation is measured by those who are alive to have seen a specific event (The rebirth of Israel) It is not until all who have been alive to see this event have died that signals an end of a generation. The scripture tells us in Isaiah 65:20, No more shall there be in it an infant that lives but a few days, or an old man who does not fill out his days, for the child shall die a hundred years old. Only a sinner will be cursed and die that young.

We are entering an event that will change the world, as we know it. Global warming, the ice caps are melting. It is now said we have less than 50 years until all the ice melts. The pressure the ice has on the land in both the South and North Pole is diminishing. The loss of earth's ice caps will trigger earthquakes, volcanoes, tsunamis, which in turn will signal a rapid increase in the size of the earth's radius.

Earthquakes are insidious elements of planetary growth. When the Earth Quakes it is a manifestation of tensional release, which is adding dimension to the Circumference of the Earth. Every moment of every day there are earthquakes all around the world adding dimension to the Earth. These quakes

occur on land and under the sea. As the Earth expands, it causes the seas to desert shorelines around the world. The rise in sea level predicted will never overtake the pace of recession of the seas as the earth continues to expand.

Then there came flashes of lightning, rumblings, peals of thunder and a severe earthquake. No earthquake like it has ever occurred since man has been on earth, so tremendous was the quake. Rev. 16:18

In the day the Lord Christ Jesus returns his feet shall stand on the Mount of Olives which lies before Jerusalem on the east; and the Mount of Olives shall be split in two from east to west by a very wide valley; so that one half of the Mount shall withdraw northward, and the other half southward. Zechariah 14:4

### **Volcano blast keep sea level low Pinatubo eruption may have delayed climate-related ocean rises**

Article by Michael Hopkin [news@nature.com](mailto:news@nature.com)

Large volcanic eruptions can have such an extreme effect on world climate that sea levels dip right across the globe, taking years to recover. When Mount Pinatubo in the Philippines blew its top in 1991, it triggered a cascade of climate events that caused the global average sea level to fall by about 6 millimetres over a single year. So say researchers led by John Church, a marine and atmospheric researcher with Antarctic Climate and Ecosystems Cooperative Research Centre in Hobart, Tasmania. The blast released huge amounts of microscopic particles, called aerosols, into the atmosphere, scattering the Sun's rays and leading to a drop in the amount of heat reaching the planet's surface. As a result, the seas cooled and contracted. The ocean level then crawled back by about 0.5 millimetres per year over the next decade or more.

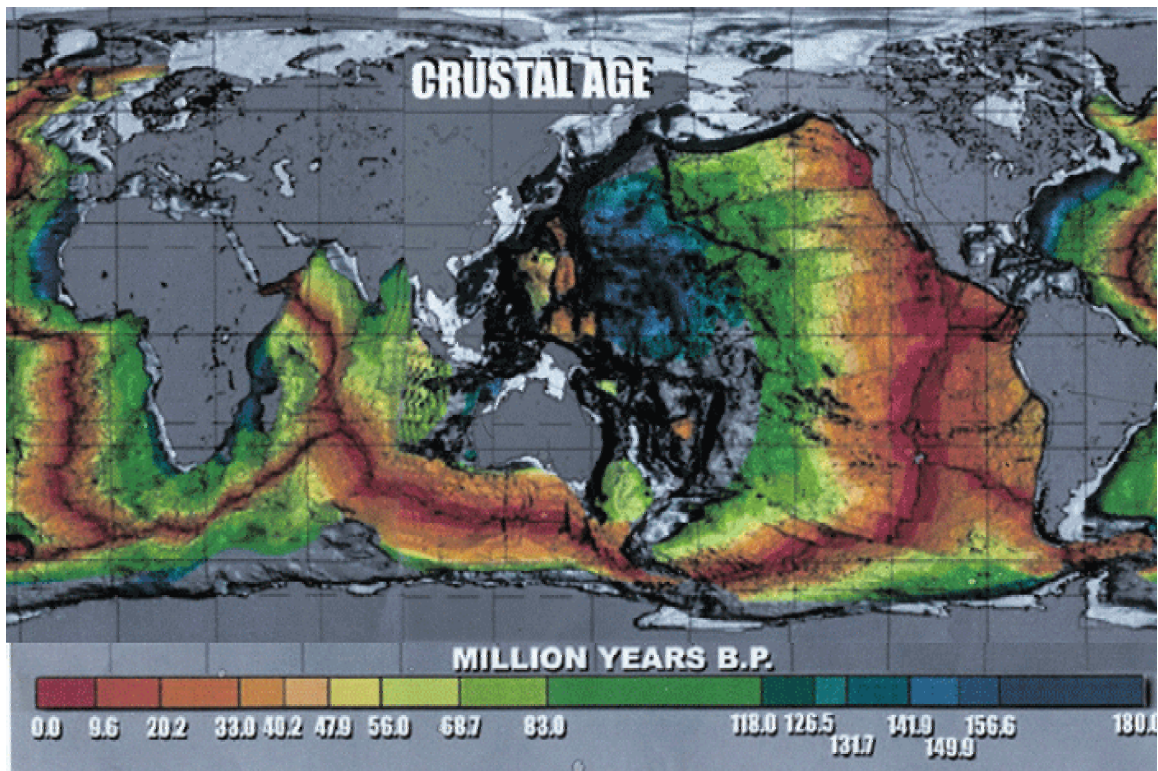
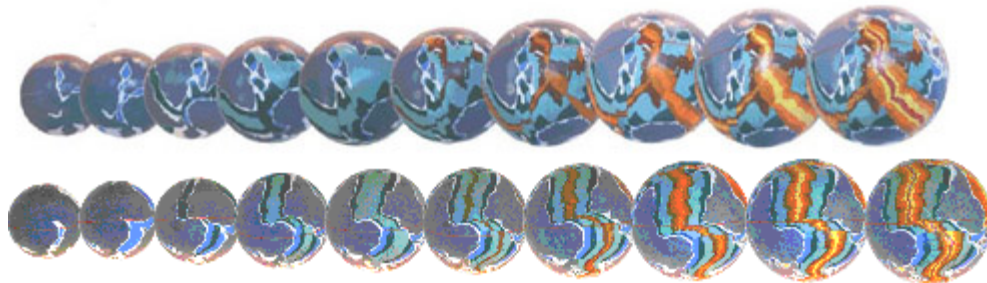
### **Fighting the tide**

The sea has risen at an average rate of 1.8 millimetres a year since 1950, but if one looks at the shorter time period of 1993 to 2000 the average is more like 3.2 millimetres per year. So about half of the difference between these rates can be accounted for by the ocean's gradual rebound after the Pinatubo eruption. The other half of this increase is attributed to ice melting and increased glacier flow at the poles, and the expansion of the sea as it is heated by rising global temperatures. By comparison, experts have predicted that a global temperature change of 2 to 6 °C over the next hundred years could cause a sea-level climb of a whopping 25 centimetres, thanks to both expanding waters and melting ice (see '[Oceans extend effects of climate change](#)'). So volcanoes might not make a big difference compared with changes expected from global warming. But they can delay sea level rises and confuse past records of sea-level change. Volcanic spate. The researchers chose to study Pinatubo's eruption because of the wealth of data on both the event and on sea levels during the years that followed. Using a computer climate model, they gauged the effects of the aerosols released into the atmosphere, and the oceans' subsequent behaviour. They calculate that the cooling effects lasted for around 18 months after the eruption, after which the

seas began once again to warm. Their results are reported in this week's Nature. I was surprised," Church told news@nature.com. "I had not realized how strong the cooling of the ocean was following a volcanic eruption."The Pinatubo event was part of a spate of large eruptions that began with the 1963 blast at Mount Agung in Indonesia. Church's team argues that global rises in sea level during this period would have been even more severe were it not for these events pushing it back down."The series of eruptions offset the acceleration in sea-level rise that would otherwise have been present from increasing greenhouse gases in the atmosphere," Church says.

\*\*\*\*\*

The following pictures shows how the Earth has been growing.







## The Kyoto Protocol - What Does America Know - The Real Reason Behind The US Refusal To Ratify The Treaty.

NEW YORK, NEW YORK, Aug. 31

Does it not seem strange that the United States has withdrawn from signing the Kyoto Protocol? Why the sudden about turn to abstain from signing? In the arena of international affairs that does appear odd? What is making the United States turn its back on this particular United Nations treaty? You can rest assured that there are motives over and beyond the actual reasons stated. All other U.N. member nations of the world, except four, have ratified the treaty. What secret or secrets does the United States hold? What secret is the United States holding back from the rest of the world? The United States has stated its reasons is that the real reason? Wouldn't you like to know? First of all the Kyoto protocol is concerned with environmental issues. Greenhouse emissions and global warming are the moot points. Because of global warming the forecast is that sea levels will rise in ensuing years to swamp low countries worldwide. Smaller nations and especially Island nations scrambled over each other in a panic to sign the treaty. They fear that in a few years their tiny island states would be inundated. Just how much of this is actually based on fact. How much of this generated fear is contrived. Let us look at what has been happening. Information easily available on the Internet tells us that global warming is a fact of life but not a function of greenhouse gasses or carbon emissions. The available information states quite clearly that if all the carbon emissions ceased immediately the earth will still continue to get hotter. The earth is generating its own internal heat. The United States knows this and that is not all it knows. It is for this, and a lot of other reasons that makes the US refuse to sign. So what does the United States know? Let us probe further. The United States has lead' the world in GPS technology. Every point on the Globe is crisscrossed by satellites, which pinpoint coordinates with great accuracy. The horizontal and vertical coordinates can be measured in millimeters of accuracy. This is a fantastic achievement considering that satellites hundreds of miles out in space make these measurements. The GPS surveillance of earth has made the compass literally useless. What has America learned from GPS surveys that they are not telling the world? Is GPS really as accurate as it is reputed to be? Lets see! When the United States first started sending satellites up to establish GPS certain anomalies on the earths surface became apparent. Over the long period of development of the technology it was discovered that coordinates moved around on the earth they did not remain fixed. This discovery was made in the early days. At first it was interpreted that the horizontal movement of the continental plates were responsible for the shifting coordinates. This however turned out to be only a part of the mystery. More fascinating findings were to come. There was no pattern to the movement but they moved. Following up on these discovery further anomalies were observed. Not only did coordinates move horizontally but also they moved vertically. Vertical coordinates, measured successively over time, were observed to be moving upward. Could the earth's surface be rising? This development puzzle the technicians, they had to make sure. This mysterious series of observations held earth-shattering implications for what was to come. The data collected over successive years posed a scientific enigma. As the vertical coordinates rose in elevation on the earth's surface the vertical coordinates of sea level fell. This mystery demanded re-examination of a plethora of data. Previously collected data was, again,

scrutinized and analyzed. The findings were classified for two reasons.

The first reason was that more time was needed to study the significance of the findings. The other was that if the data were correct Global Warming would be irrelevant. It was discovered that sea level datum was not fixed as we had been made to believe. As long as could be remembered sea level datum was assumed to be a fixed reference point. All topographical elevations on earth are taken from Mean Sea Level Datum. That datum was never supposed to move. Now GPS had shown clearly that Mean Sea Level Datum was a myth. GPS revealed that sea level was falling constantly. Not only was it falling but also from all indications, had been doing so for a very long time. What was now emerging from the data was clear images of successive ancient shorelines. These shoreline images showed in wavelike fashion how far inland seas had reached in bygone eras. They were amazed at the extent of the seas encroachment. Not only did the sea encroach inland in ages past. Old shorelines showed the heights reached by ancient seas covered all the continents. This new information brought with it a million questions. The major question to be answered was if, as had been clearly indicated, the seas were much higher and were still falling in level. What was the engine of displacement? Where was all that water that once covered the major part of the earth? Where had it all gone? Why was sea level creeping mysteriously lower and lower? It had always been assumed to be a fixed datum. So why have we never heard anything about all these amazing discoveries. Why no announcements of these colossal findings. The reason is simple. As more and more data came in and was analyzed more earth shattering revelations came. All that we believed we knew or for that matter perceived we knew was being disproved by GPS. The constant change in the vertical coordinates of land and sea elevations meant only one thing. It could not be denied, the data did not lie. It was obvious that the earth was expanding. The conclusion was that the fall and retreat of seas from shorelines worldwide was a direct result of that expansion. The vertical rise of the earth coordinates indicated expansion. The vertical fall of sea levels indicated the outfall of the expansion process. Now how were they to announce that planet earth was expanding? They definitely could not. Not at that moment, not at that time. The multiple discoveries were stupendous. All of a sudden they were assailed by all this new information, which conflicted with all that had been known, and or, taught before. In one-way scientists had painted themselves into a corner. In another way the information they now possessed had tremendous implications for all sciences. Serious consideration had to be given to the information overload.

GPS was stirring up a hornet's nest of information contrary to what was, up to then, accepted thought. It showed that the earth was expanding. It was for years mainstream thought had propounded that the earth was constant in size. All theories about the earth were phrased to suit the format that the earth was static i.e. always the same size. After years and years of flawed theories to justify that concept it was suddenly realized that the opposite was true. First of all there was the plate tectonic theory. That stated that the earth was of constant size and the continental plates moved around on the surface. After two generations that theory was found to be flawed. There had to be some other theory to justify that the Atlantic was expanding. It was then that the subduction theory was presented. This theory stated that the Pacific plate subducted under the North America and South America's plate. Again this was to justify a constant earth. The premise was that the Atlantic was known to be

expanding therefore the Pacific had to be contracting. The contraction was effected by subduction under the Americas. Now after another two generations of compiled data that theory was found to be flawed. The Pacific was also found to be expanding. GPS was overturning many previously accepted theories. I was showing up ancient shorelines all around the world with an unprecedented clarity. It was also telling us that these shorelines had reached higher elevations on land, much higher than ever before imagined. Not only was GPS showing up the flaws in current thinking as far as earth sciences went. It was also showing that the history of civilization had to be rewritten. The information revealed would be of tremendous help to archaeologists, paleontologists, geologists, anthropologists and many other areas of science. With all the data collected and verified more startling discoveries started to emerge. What became abundantly clear was that many other theories about the earth and its surface were flawed. One such theory was Isostasy. It had been previously accepted that the earth rose from the sea because of a process called Isostatic rebound. This propounded that the land mass rises from the sea because it has been relieved of the ice burden from the last ice age. The GPS survey had disproved all this. It had clearly shown that the sea receded from the land. This retreat of the sea created the illusion that the land mass rose. This theory was flawed because it had always been accepted that sea level was a fixed datum. Now that it was discovered that sea levels fell, and were always falling, the opposite appeared to be true. The exact mirror image of Isostatic rebound is what was really happening. The sea levels were falling all around the world because of the earth's expansion. So the conclusion was that Isostatic rebound was an illusion caused by receding seas. Sea level was the variable factor in the equation not a constant. This was really some momentous deduction, but what were they to do with the information? The amount of information derived from the surveys was too much to handle at once. Too much of it was of a sensitive nature. A lid was put on all information. It had to be kept from the public domain. All the information was classified and a gag order was placed on all the agencies that had worked on GPS up to that point. All information and all future investigations were turned over to the National Optical Astronomy Observatory. NOAO. They were the only agency allowed to oversee and carry on research on the data, which had been compiled up to that time. All GPS maps, which had been made up to that time by the USGS, were classified. It was prohibited to sell any of the maps. All topographical maps that had been compiled with GPS sensitive information were classified for military purposes only. They could not be obtained on the open market. The Kyoto protocol was initiated in 1997 and during the ensuing years the United States has become privy to all this information, which has influenced thinking about the earth and its mysteries. They know that global warming is a function of the earth's own internal heat. They also know that sea levels are falling all around the world. In the more than twenty years of the GPS development and data sea levels have dropped considerably. This drop in sea level far outstrips any rise forecasted by the Kyoto pronouncements. Now they had also learned that Isostatic rebound was an illusion and had no basis in reality. The United States is privy to all this information and this is one of the main reasons that they have withdrawn from signing the protocol. The US has stated their reason for not signing the protocol. Their decision not to sign has been met with harsh criticism by other member nations to the Kyoto protocol. The Government of the United States will withstand this criticism in the name of what it knows and its own national security. Scientists and archaeologists although not privy to any of this information are chipping away at the truth. In more than one article



archaeologists, in various parts of the world, are finding out what GPS has already revealed. There have been articles in the press about archaeological finds in high mountain areas, which will bring the secret into the open one way or another. In the New York Times article " Civilization Cradle Grows Larger" Dr Gill of Northwestern University has pointed out that a dig at Hamoukar indicates without a doubt that ancient civilization in Mesopotamia started in the mountains. The Persian Gulf was much further inland at that time. GPS had revealed all this information. An article in the Times of India by Professors Gaur and Vora tells of finding ancient shorelines far inland at Gujarat. They have established that Gujarat was once a port on the Arabian Sea. The town of Sandwich on the south coast of Britain had a large harbor in the Middle Ages, today however the town is three miles inland. The Port of Ephesus in Turkey, where St Paul landed on several occasions is now six miles inland. Ur of the Chaldees the birthplace of Abraham, the father of the Jewish Nation, was once a bustling port on the Persian Gulf. Today Ur is 200 miles from the sea and 135 feet above sea level. The most remarkable finding however and one that put a lid on a plethora of information is that Baghdad was also a port on the Gulf, ages ago, but is now 350 miles from the sea and 125 feet above sea level. All these anomalies have been confirmed by GPS and classified under a veil of national security. The maps and the information they contain have been classified. GPS and allied technology has revealed all the ancient shorelines around the world. It has also revealed much more than the Government is prepared to release. It has shown quite conclusively that sea levels were much higher in ancient times and as such dictated the development of civilization downward. It has given the United States advanced technological information, which it is reluctant to release for strategic purposes. The United States government is quite convinced that the sea levels will not rise worldwide. How do they know this? The answer lies in the data they have collected since the early days of GPS development. The fall in sea levels that they have detected clearly indicate that sea levels fall faster than any rise due to global warming. The Government now knows that any sea level rise will have a negligible effect on the already established recession of the seas. Is this the reason they will not sign the protocol? Not really there is something more. An article in the New York Times tells about a GPS survey revealing a sixty-foot boundary error between Rhode Island and Connecticut. This error corrected a survey done 140 years ago. GPS has shown up millions of such errors in surveys nationwide. If these errors were revealed it would tell us that not one piece of real estate is where it is supposed to be on the map. The very house you live in is not where it was last year. Your house lot has shifted and will keep shifting. If the extent of earth movement and coordinate shift were known it would create panic in the housing markets. Insurance Companies, Banks Title and Mortgage companies would find themselves swamped in litigation. Lets us just think for a moment. If the boundary of Rhode Island and Connecticut is out by 60 feet what does that say for every boundary for every piece, or parcel of land across the face of the United States. But this is by no means the only problem. The Government cannot reveal that a mysterious growth of land across Texas is already causing territorial disputes between ranchers. All these newfound anomalies, and more, have to be kept under wraps by the Government. The fact that the earth is expanding will never be revealed for the same reason that the Government denies any UFO report. It does not want people to panic. What is a fact however is that the United States knows that our seas are receding and that Global warming is caused by the Earth own internal heat, which is increasing. GPS has provided them with this information. The Kyoto Protocol came

into effect on February 16 2005. The United States has become privy to much information, which bears directly on the tenets and articles of the Kyoto treaty. The two main precepts of the treaty are global warming and the resultant sea level rise. The United States has information, which refutes these concepts. We might never know the information, which GPS has revealed, through government channels. The United States will not reveal its information in defense of its refusal to sign. In the final analysis it is a matter of national security and that overrides all other national or international interests. The United States has said that it will not sign the protocol. The reason stated is that it will restrict national economic development. The truth therefore will only be revealed over time and through the most unlikely sources, as usual. Archaeologists and other scientists all around the world will continue to whittle away at the veil of secrecy. They will do so within the parameters of their own professional pursuits. They will be going about their business as usual. They will use facts, which they have at their disposal to make other discoveries. They will not however be in possession of information, which is currently classified. They will not be privy to all this wealth of information made available to us by GPS. They will, perhaps never know, that all they may discover in the future, through research and persistence, may be already known to the powers that be. The United States is in possession of knowledge and that knowledge translates into power. Australia, Croatia, Kazakhstan and Monaco have not signed as party to the Kyoto agreement and they all have their reasons for not signing. The United States has theirs. The official US statement is that, to sign will interfere with economic progress in the years to come. We know better. Do we?

Article by Richard Guy 8/31/06

## **Dreams & Visions**

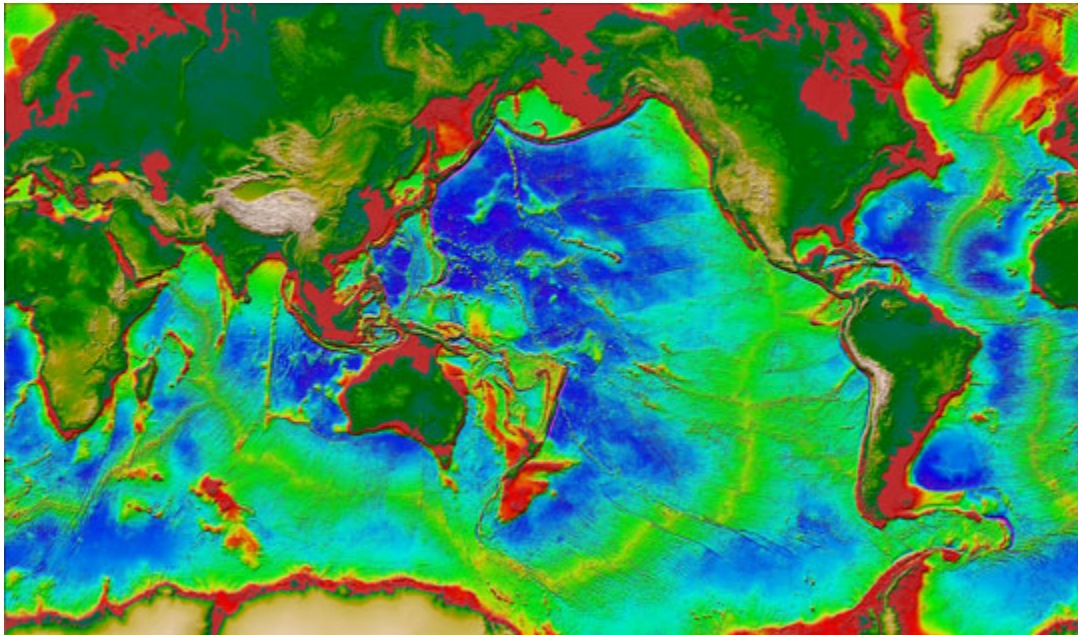
A dream by cmdipstick  
Aug 11, 2006

About 5 nights ago, I had a dream, and in my dream I was shown how the world was flooded when Noah built his ark. Watching it happen showed me, and I just understood without anyone telling me what was going on. So basically I saw one huge chunk of land, and then there was a great earthquake. When that earthquake happened, the Aquifers under the earth's surface drained out like a lot of huge geysers. All while this was going on, it was raining. I understood that there was a lot more water in the aquifers then, compared to what there is now. I also understood that this was the catalyst of the separation of the tectonic plates, because this created an ocean between all of the chunks of land. I don't know why I had this dream or what it means anything.

A vision I had, July 17, 2005

In a vision I saw the ocean level drop  
in the vision I saw underground air pockets under the ocean.  
I saw a great earthquake, a shifting of the landmasses that broke open the  
underground air pockets and the water just rushed in.  
I saw the Gulf of Mexico become a lake.  
I saw the Caribbean Sea also become a lake.  
I saw Indonesia become a solid landmass stretching all the way to Australia.  
New Zealand became one Island  
The South China Sea became a large lake;  
the Sea of Japan became a lake also.  
In Europe, Ireland and the United Kingdom more than doubled in size and  
became part of the European Continent.  
The Mediterranean Sea shrank to half its size.  
The Black Sea shrank becoming a fresh lake.  
It was like the ocean sea level dropped, turning the Continental shelf into dry land.

**Continental Shelf is in red**



Reference:

<http://www.nealadams.com/nmu.html>

<http://www.ngdc.noaa.gov/mgg/image/crustageposter.gif>

<http://www.ngdc.noaa.gov/>